



Victory Ville Homepage:  
<http://launchproperty singapore.com.sg/new-launch/property/victory-ville.html>

*Victory*  *Ville*

 Call 9048 0660 to find out more!

## Lead A Victorious Life

Nestled amongst the greenery and away from the madding crowd, Victory Ville is the ultimate sanctuary of timelessness and peace. Be wooed by the tenderness of nature and its myriad colours as you immerse yourself in the tranquil and spacious setting built just for you and your family.



Victory Ville Homepage:  
<http://launchproperty.com.sg/new-launch/property/victory-ville.html>



Call 9048 0660 to find out more!





## *The Mark of Sophistication*

Victory Ville stands in a league of its own. Distinctly set apart by its sleek and modern facade, these 8 exclusive semi-detached cluster homes offer unparalleled comforts within its private compound. Truly alluring and appealing to the discerning urbanite.



**Call 9048 0660 to find out more!**

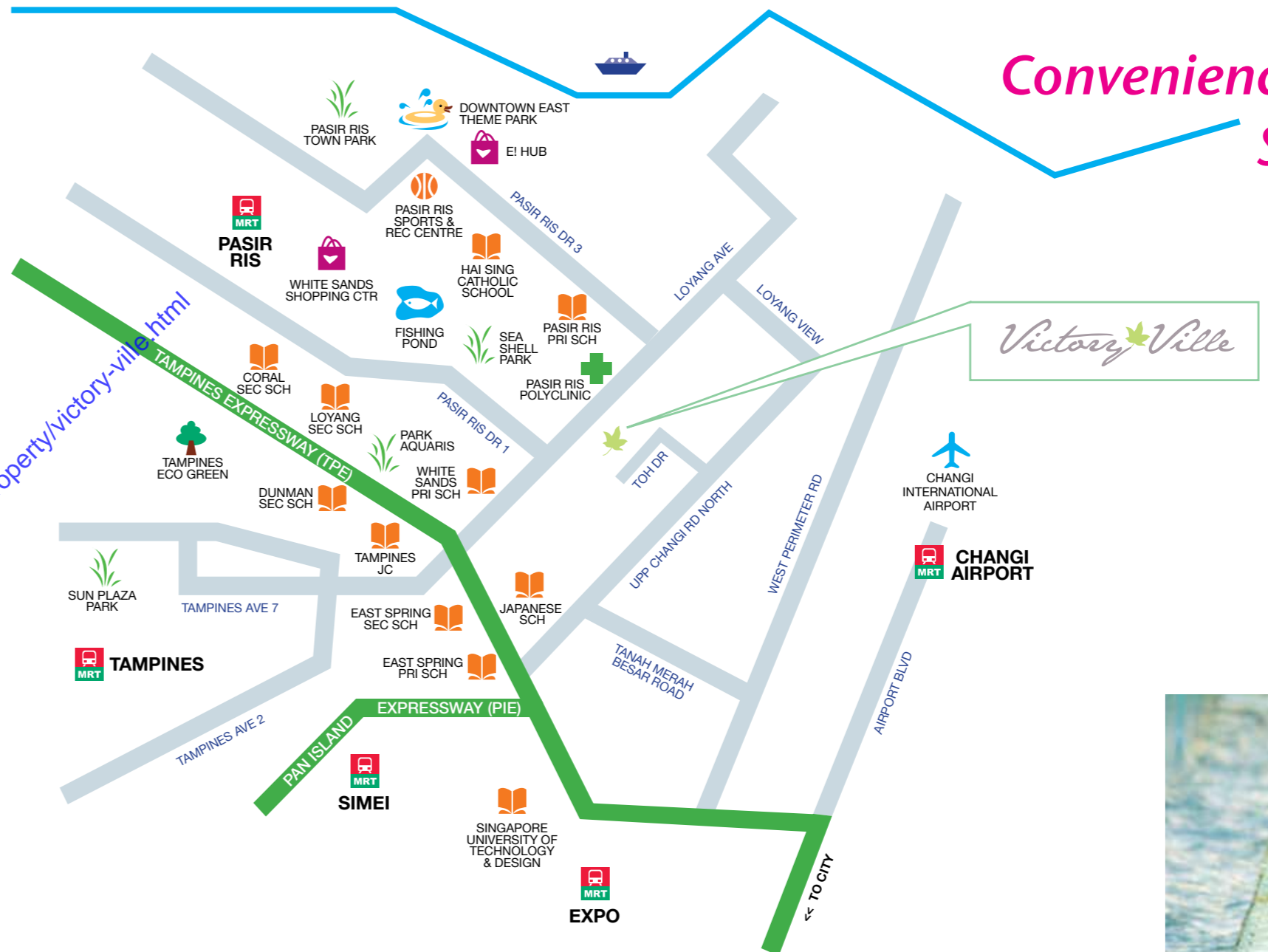




## An Abode of Great Stature

Get a taste of luxury at Victory Ville as you settle into an atmosphere of elegance and serenity. Be impressed by the stately architecture, quality carpentry and meticulous finishings.

Victory Ville Homepage:  
<http://launchproperty.com.sg/new-launch/property/victory-ville.html>



## Convenience at a Stone's Throw Away

With the Ikea flagship store, Giant, Courts and Downtown East just a short drive away, your daily necessities, shopping needs and entertainment will be easily taken care of.



 Call 9048 0660 to find out more!





## The Ideal Home

Nothing beats going home to Victory Ville after a hard day's work. The comforts of home should be a fulfilling experience every day. Get ready to be mesmerised with a lifestyle that will surely complete you.



**Call 9048 0660 to find out more!**



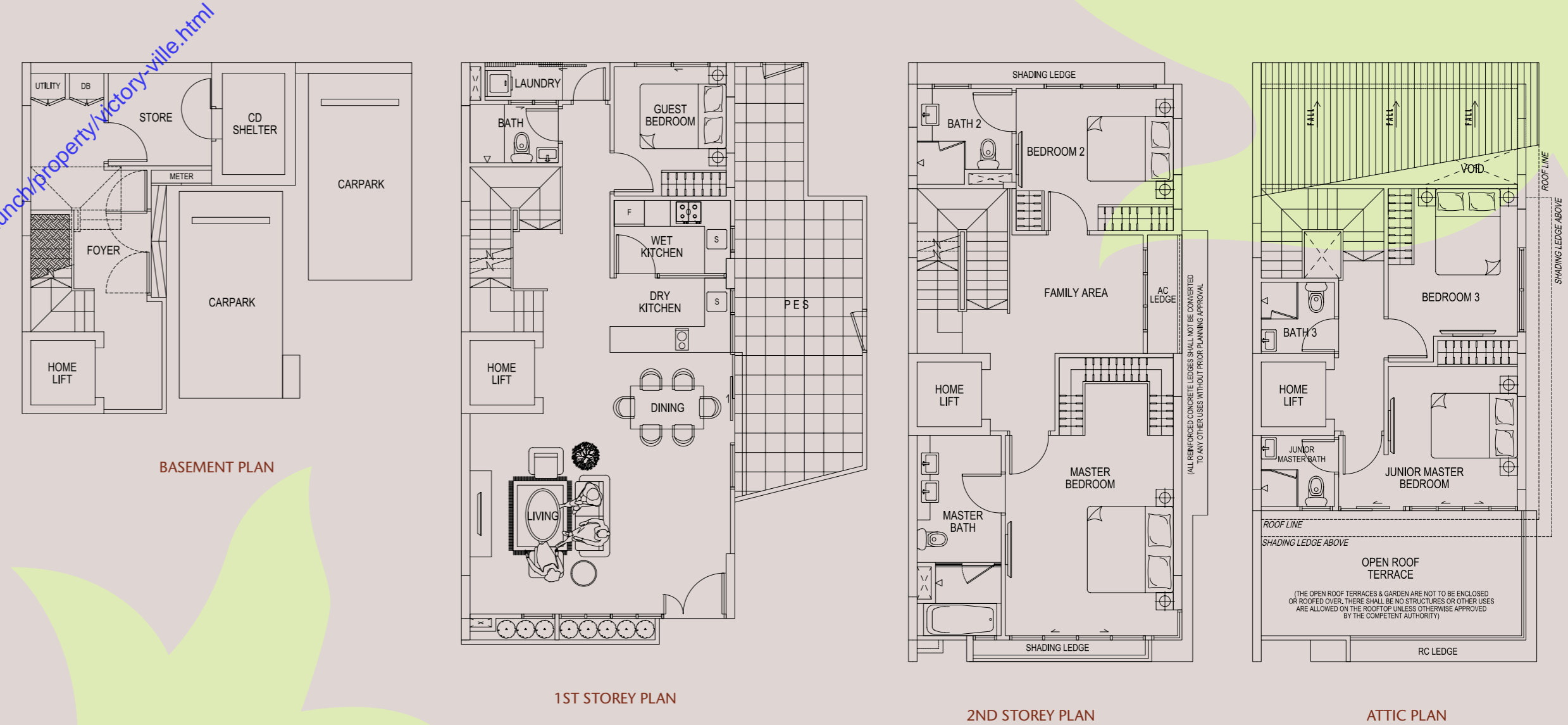
# Site Map



- Legend
- A Pedestrian Entrance
  - B Vehicular Entrance
  - C Guard House
  - D Barbecue Pit
  - E Children's Playground
  - F Toilet for Handicapped
  - G Pool Deck
  - H Shower Area
  - I Swimming Pool
  - J Children's Pool

# Floor Plan

**23 Toh Drive**  
 319sqm / 3434sqft  
 (Include 37sqm Private Carpark, 25sqm PES, 2sqm Planter, 13sqm RC Ledge, 2sqm AC Ledge, 18sqm Roof Terrace and exclude 3sqm Shading Ledge, 9sqm Lift Void, 2sqm Duct and 15sqm Void)



**Call 9048 0660 to find out more!**