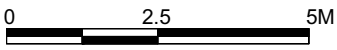


# 2-Bedroom



TYPE B1-5(P)  
87 sq m / 936 sq ft  
BLK 145 - #01-61\*, #01-68

TYPE B1-6(P)  
87 sq m / 936 sq ft  
BLK 127 - #01-06  
BLK 129 - #01-12

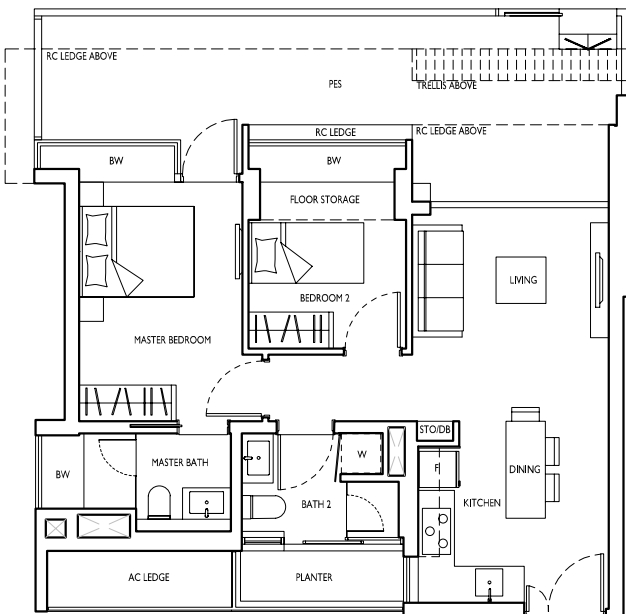
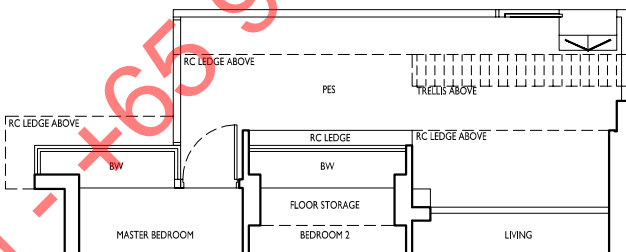
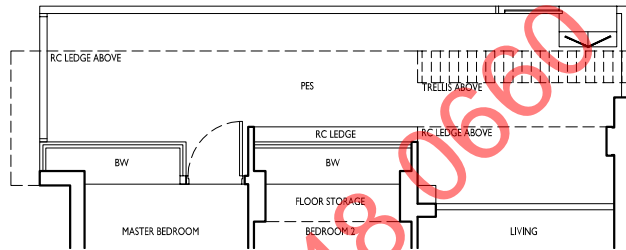
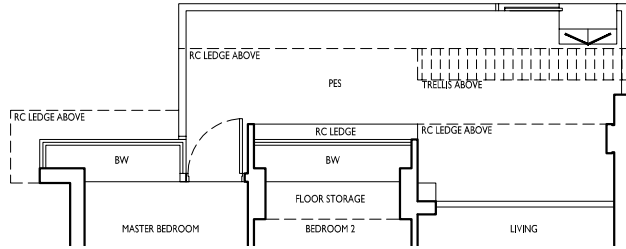
TYPE B1-1(P)  
92 sq m / 990 sq ft  
BLK 133 - #01-23\*  
BLK 143 - #01-55\*

TYPE B1-2(P)  
92 sq m / 990 sq ft  
BLK 133 - #01-19\*

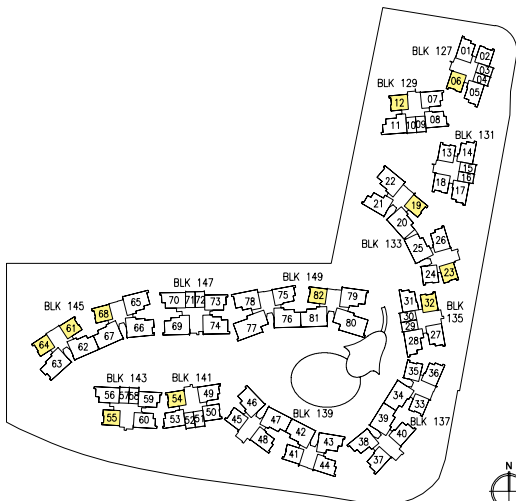
TYPE B1-3(P)  
92 sq m / 990 sq ft  
BLK 149 - #01-82

TYPE B1(P)  
87 sq m / 936 sq ft  
BLK 141 - #01-54

TYPE B1-7(P)<sup>+</sup>  
91 sq m / 980 sq ft  
BLK 135 - #01-32



\*mirror unit

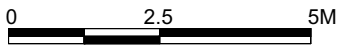


KEY PLAN NOT TO SCALE



<sup>+</sup> The use of the name Type B1-7 (P) for Block 135 unit #01-32, is subject to authorities' approval.

# 2-Bedroom



TYPE B1-5  
70 sq m / 753 sq ft  
BLK 145 - #02-61\*, #02-68

TYPE B1-6  
70 sq m / 753 sq ft  
BLK 127 - #02-06  
BLK 129 - #02-12

TYPE B1-1  
70 sq m / 753 sq ft  
BLK 133 - #02-23\*  
BLK 143 - #02-55\*

TYPE B1-2  
70 sq m / 753 sq ft  
BLK 133 - #02-19\*

TYPE B1-3  
70 sq m / 753 sq ft  
BLK 149 - #02-82

TYPE B1-4  
70 sq m / 753 sq ft  
BLK 145 - #02-64

TYPE B1  
70 sq m / 753 sq ft  
BLK 131 - #02-18  
BLK 141 - #02-54

TYPE B1-7<sup>+</sup>  
70 sq m / 753 sq ft  
BLK 135 - #02-32

TYPE B1-1  
70 sq m / 753 sq ft  
BLK 133 - #03-23 to #11-23\*  
BLK 143 - #03-55 to #12-55\*

TYPE B1-2  
70 sq m / 753 sq ft  
BLK 133 - #03-19 to #11-19\*  
BLK 137 - #03-33 to #11-33\*

TYPE B1-3  
70 sq m / 753 sq ft  
BLK 149 - #03-82 to #12-82

TYPE B1-4  
70 sq m / 753 sq ft  
BLK 145 - #03-64 to #13-64

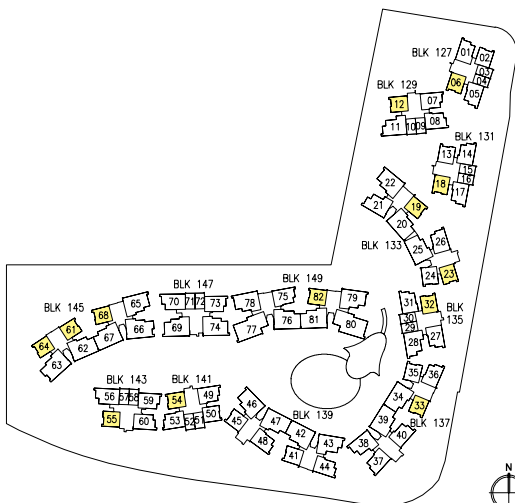
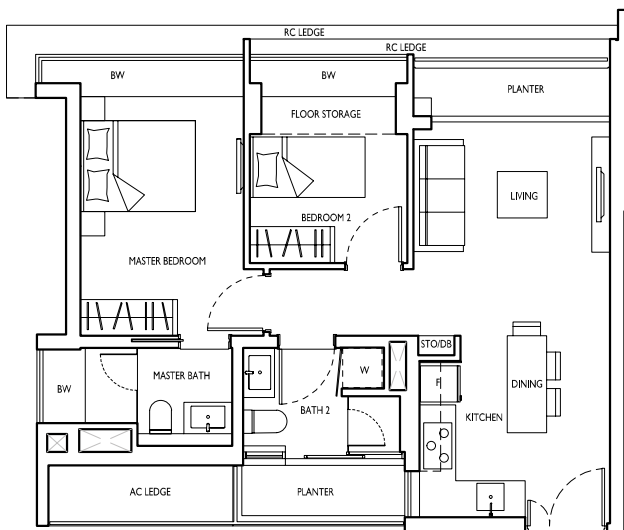
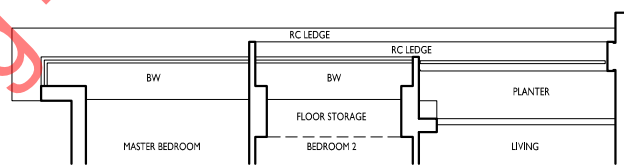
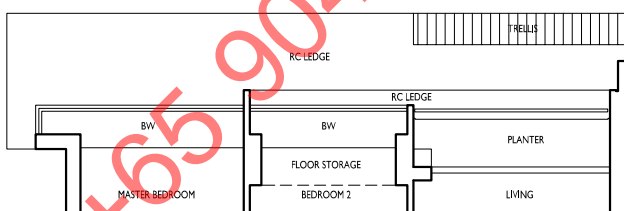
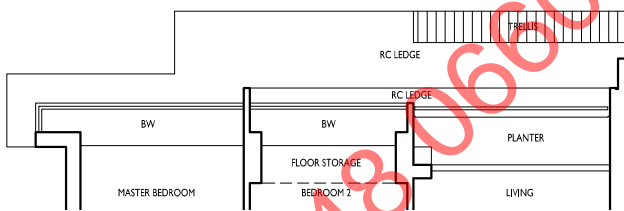
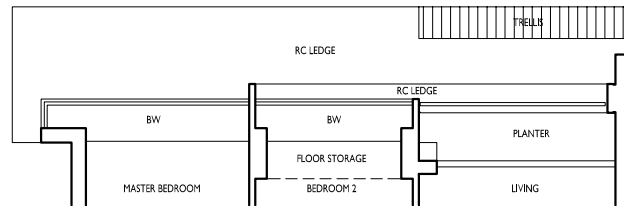
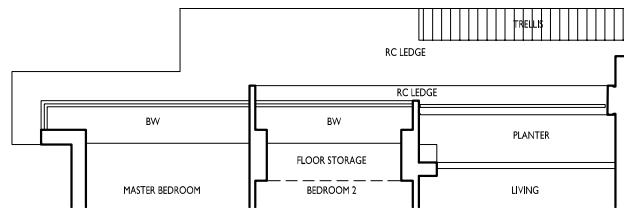
TYPE B1-5  
70 sq m / 753 sq ft  
BLK 145 - #03-61 to #13-61\*  
- #03-68 to #13-68

TYPE B1-6  
70 sq m / 753 sq ft  
BLK 127 - #03-06 to #11-06  
BLK 129 - #03-12 to #11-12

TYPE B1  
70 sq m / 753 sq ft  
BLK 131 - #03-18 to #11-18  
BLK 141 - #03-54 to #11-54

TYPE B1-7<sup>+</sup>  
70 sq m / 753 sq ft  
BLK 135 - #03-32 to #11-32

\*mirror unit

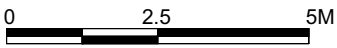


KEY PLAN NOT TO SCALE

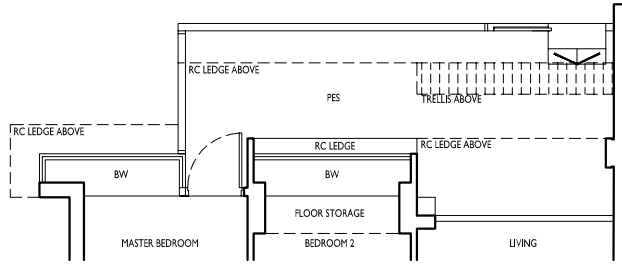


+ The use of the name Type B1-7 for Block 135 unit #02-32 to #11-32, is subject to authorities' approval.

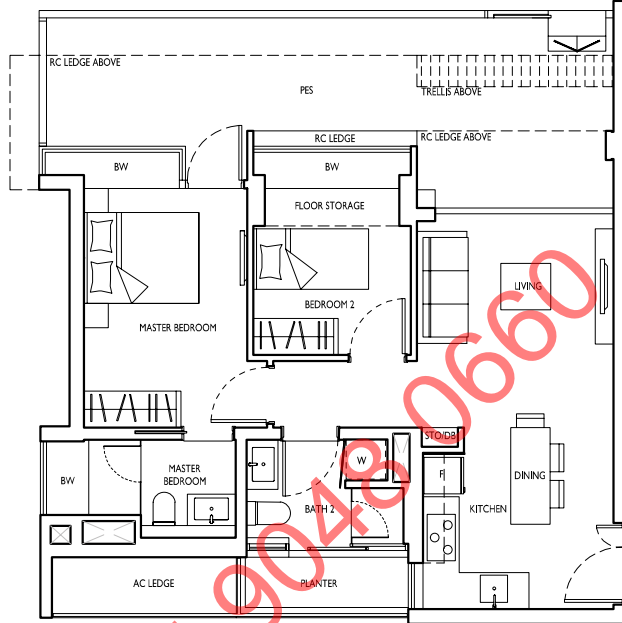
# 2-Bedroom



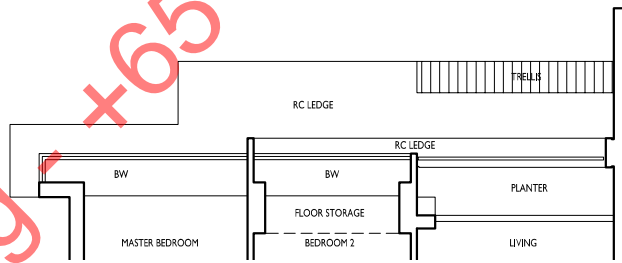
TYPE B1a-1(P)  
86 sq m / 926 sq ft  
BLK 141 - #01-50



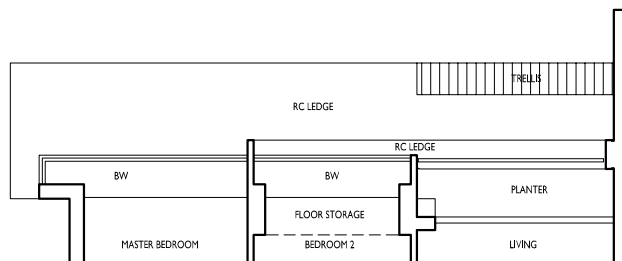
TYPE B1a(P)  
92 sq m / 990 sq ft  
BLK 127 - #01-02



TYPE B1a-1  
70 sq m / 753 sq ft  
BLK 141 - #02-50



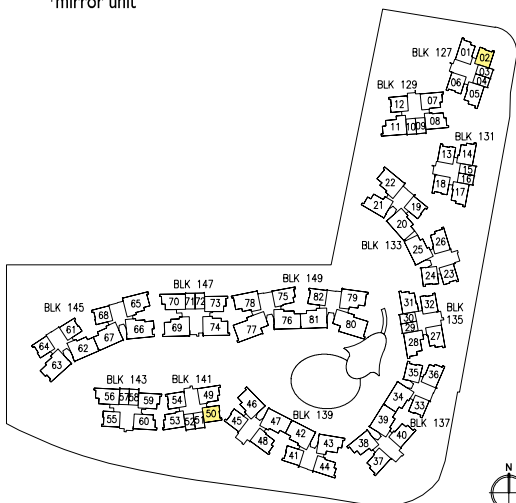
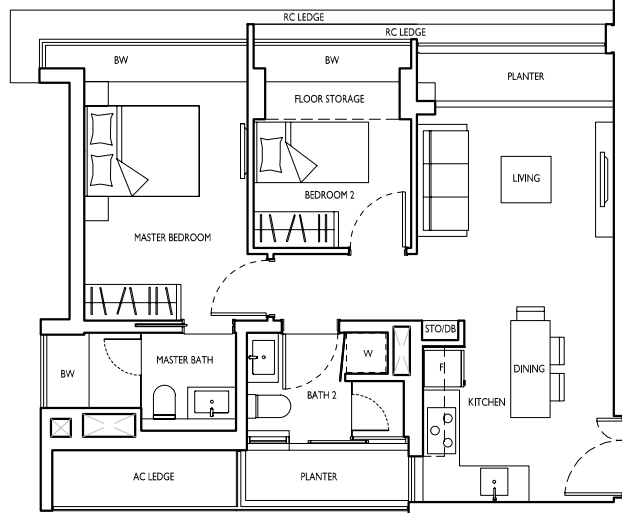
TYPE B1a  
70 sq m / 753 sq ft  
BLK 127 - #02-02



TYPE B1a  
70 sq m / 753 sq ft  
BLK 127 - #03-02 to #11-02

TYPE B1a-1  
70 sq m / 753 sq ft  
BLK 141 - #03-50 to #11-50

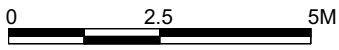
\*mirror unit



KEY PLAN NOT TO SCALE



# 2-Bedroom

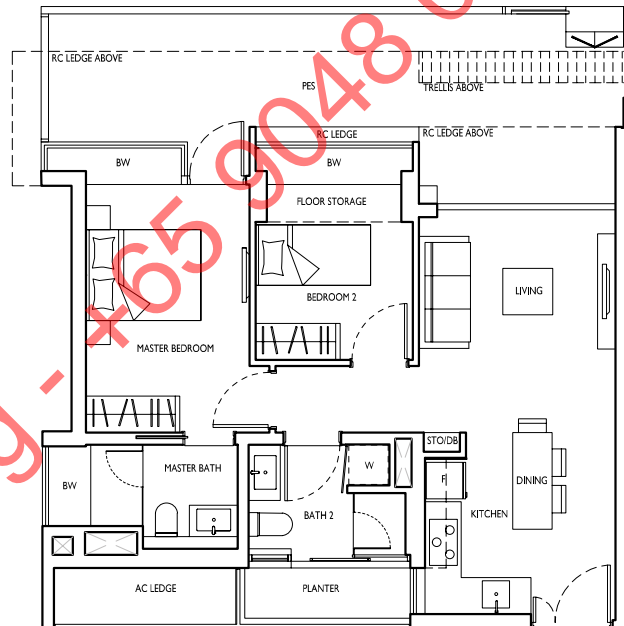
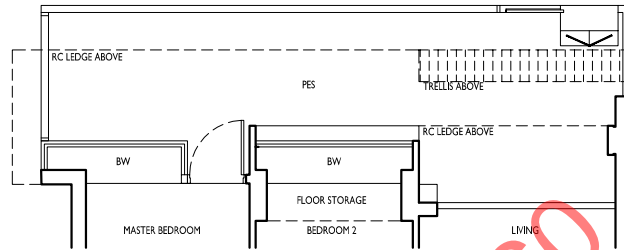


TYPE B2-3(P)  
94 sq m / 1012 sq ft  
BLK 139 - #01-45\*

TYPE B2-4(P)  
94 sq m / 1012 sq ft  
BLK 139 - #01-41\*

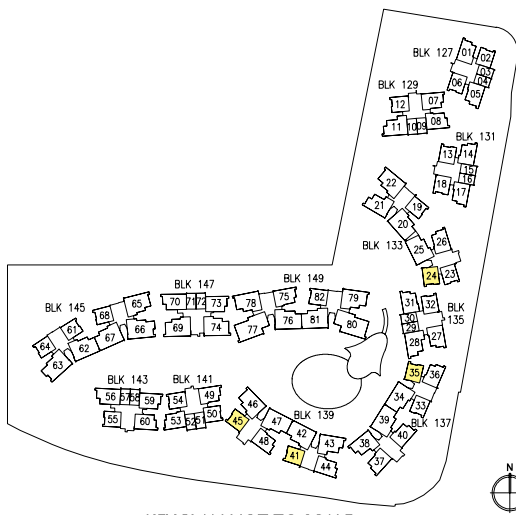
TYPE B2-1(P)  
94 sq m / 1012 sq ft  
BLK 133 - #01-24

TYPE B2-2(P)  
94 sq m / 1012 sq ft  
BLK 137 - #01-35\*



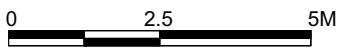
Kaeden Ong - 65 9048 0660

\*mirror unit

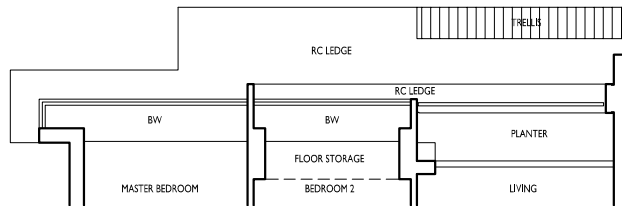


KEY PLAN NOT TO SCALE

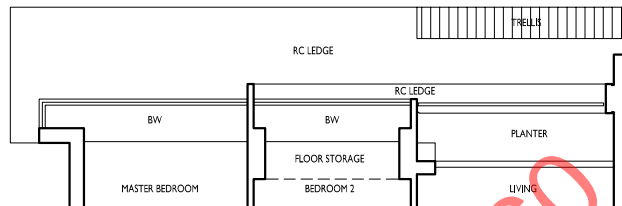
# 2-Bedroom



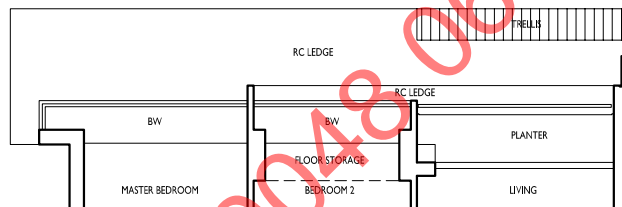
TYPE B2  
72 sq m / 775 sq ft  
BLK 131 - #02-13\*



TYPE B2-3  
72 sq m / 775 sq ft  
BLK 139 - #02-45\*

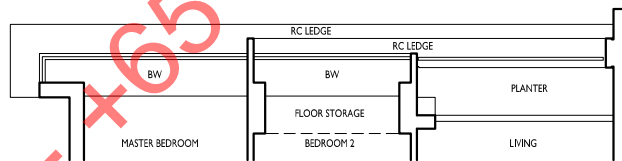


TYPE B2-4  
72 sq m / 775 sq ft  
BLK 139 - #02-41\*



TYPE B2-1  
72 sq m / 775 sq ft  
BLK 133 - #02-24

TYPE B2-2  
72 sq m / 775 sq ft  
BLK 137 - #02-35\*

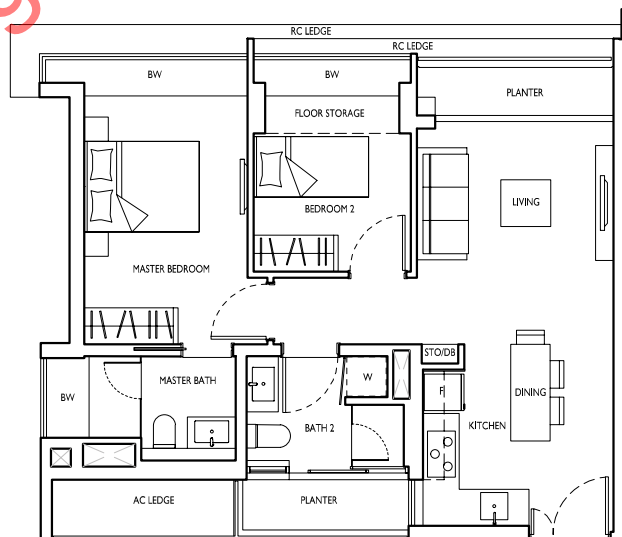


TYPE B2 TYPE B2-4  
72 sq m / 775 sq ft 72 sq m / 775 sq ft  
BLK 131 - #03-13 to #11-13\* BLK 139 - #03-41 to #11-41\*

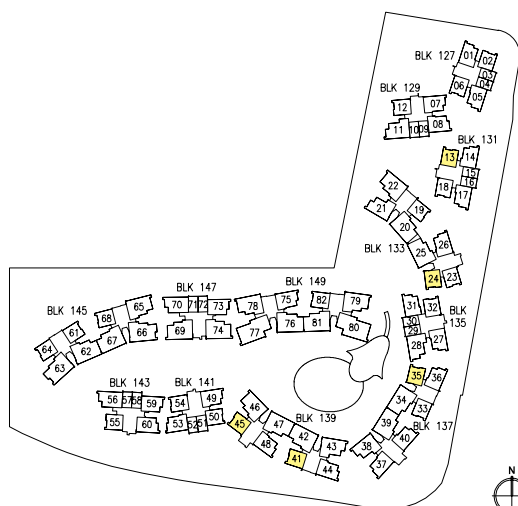
TYPE B2-3  
72 sq m / 775 sq ft  
BLK 139 - #03-45 to #11-45\*

TYPE B2-1  
72 sq m / 775 sq ft  
BLK 133 - #03-24 to #11-24

TYPE B2-2  
72 sq m / 775 sq ft  
BLK 137 - #03-35 to #11-35\*



\*mirror unit



KEY PLAN NOT TO SCALE

Kaeden Ong - +65 9048 0660